



**USAID**  
FROM THE AMERICAN PEOPLE

# FOREST ALLIANCE

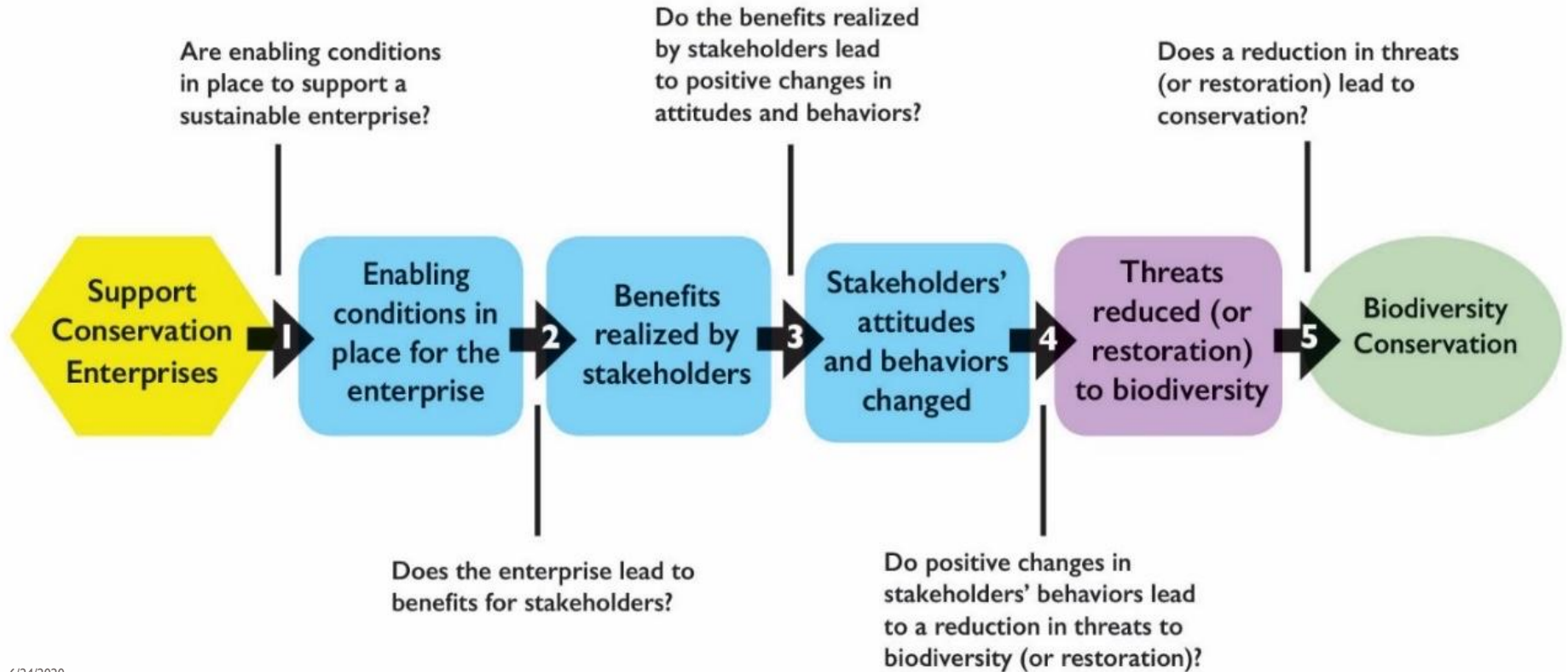
MANAGING COMMUNAL FORESTS THROUGH  
INCLUSIVE AND SUSTAINABLE BUSINESSES  
WITHIN THE FRAMEWORK OF INDIGENOUS  
ECONOMY

Marioldy Sanchez - AIDER  
Alvaro Gaillour - USAID Peru  
June 24th, 2020



**AIDER**  
Bosque manejado | Futuro asegurado!

# USAID'S CONSERVATION ENTERPRISES THEORY OF CHANGE: Learning Questions Examine Assumptions in the TOC



# TODAY'S SPEAKERS

**Marioldy Sanchez**  
AIDER



**Alvaro Gaillour**  
USAID Peru



# PRESENTATION OUTLINE

- Introduction
  - Context
  - The Forest Alliance (FA)
- Inclusive and sustainable businesses for Communal Forest Management
  - Problem addressed
  - Theory of Change
  - FA activities and progress
- Communal Forest Management model
  - Model key elements
  - Challenges



PHOTO: AIDER

# INTRODUCTION – Context

- Indigenous communities in the Peruvian Amazon: 418,000 people, 2,700 communities, 40 languages
- Negative impacts to indigenous livelihoods due to ecosystem degradation and extractive economic activities
- Main economic activities: agriculture, fishing (mostly for subsistence)
- Very few businesses led by indigenous peoples
- High migration of indigenous youth to cities seeking for job opportunities



PHOTO: MARLON DAG FOR ECOSPHERE +

# INTRODUCTION – The Forest Alliance

- The Forest Alliance supports indigenous communities in Ucayali to conserve and manage their forested lands under a GDA
- Althelia Mirova works with AIDER in conserving communal forests and marketing the carbon stocks conserved, thus generating profits for the Alliance

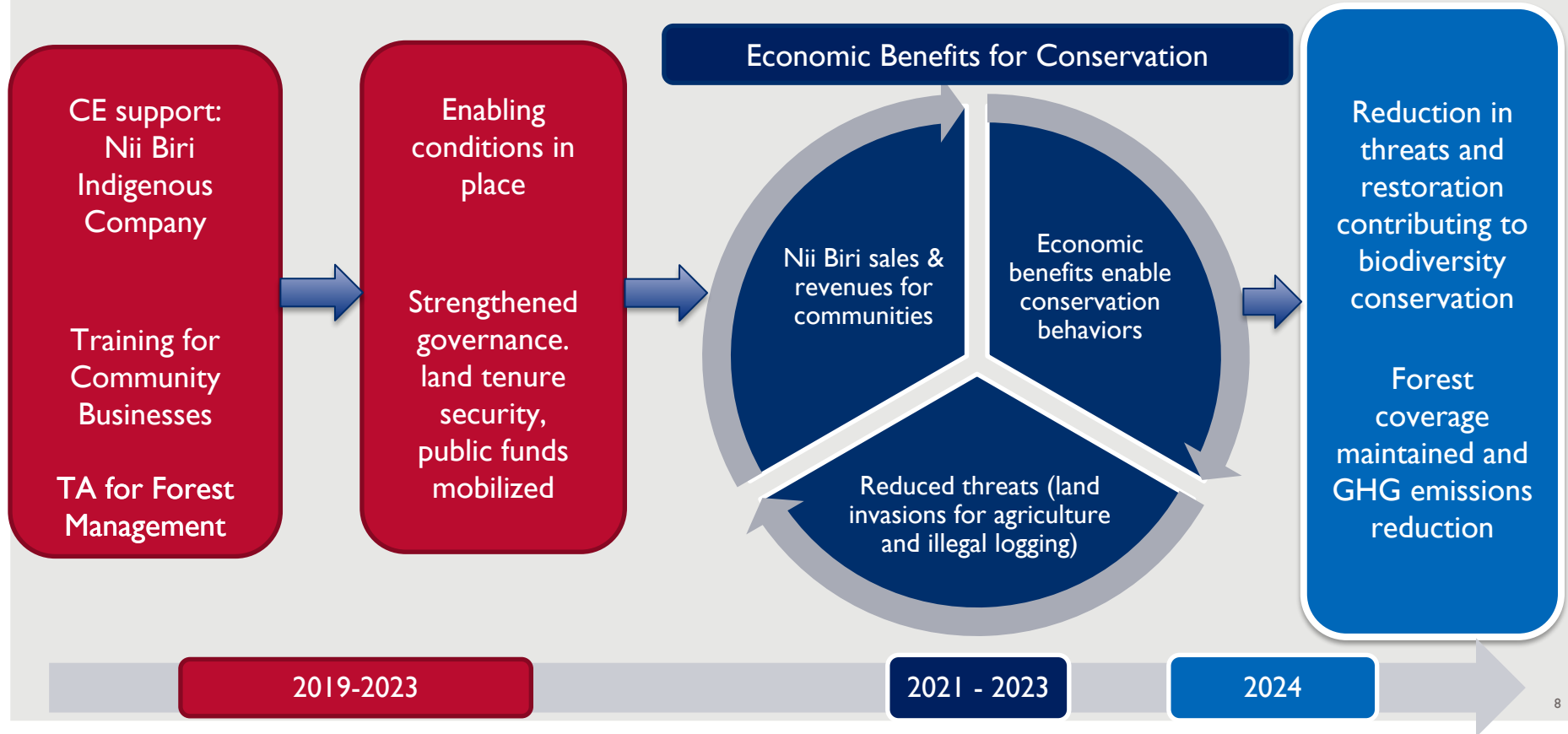


# Inclusive and sustainable business for Communal Forest Management – The problem: socio-economic exclusion

- Ensuring economic benefits from forests sustainable management
- Indigenous entrepreneurs achieving social and environmental progress weakly included in overall value chains
- Businesses with no cultural pertinence (non-inclusive)
- Very limited access to funding sources
- Barriers to a trust relationship with the private sector



# Inclusive and sustainable businesses for Communal Forest Management - Theory of Change





# Forest Alliance activities and progress



# Support CE: Nii Biri indigenous company



## Legal, technical and business training

Training on the ground, learning by doing process & experience exchange



## Economic activities business-oriented

Agroforestry, forest plantations, timber and non-timber forest products, handcrafting, REDD+



## Forest management technical assistance

Implementation of forest management plans, FSC certification, forest governance aligned to Life Plans



## Business support

Financial sustainability plan (Nii Biri leverage of public/private funds)  
Business social organization  
Access to markets

# Enabling conditions in place



## Strengthened governance for businesses

- Communal governance enhanced for CFM
- Social community organization for business, aligned with communal governance
- Partnerships between communities and key stakeholders: AIDER, Althelia



## Land tenure security

- Committees of surveillance and forest control operating according to Nat'l Forest Law
- Participatory early warning system for deforestation and illegal activities
- Land use conflicts addressed
- Official bordering



## Channel public funds

- Agreement with Regional Government of Ucayali to foster the access of Nii Biri to public funds
- Agreements under negotiation with public/private entities as part of CFM Financial Sustainability Plan (FSP)

# Economic Benefits for Conservation

## Economic benefits:

- Increase of Nii Biri annual sales (US \$6,000 sales in 2019)
- Women artisans incomes increased
- REDD+ benefits:
  - Materials and supplies for the operation of control and surveillance committees
  - Implementation supplies for agroforestry, forest plantations and timber sustainable & NTFP



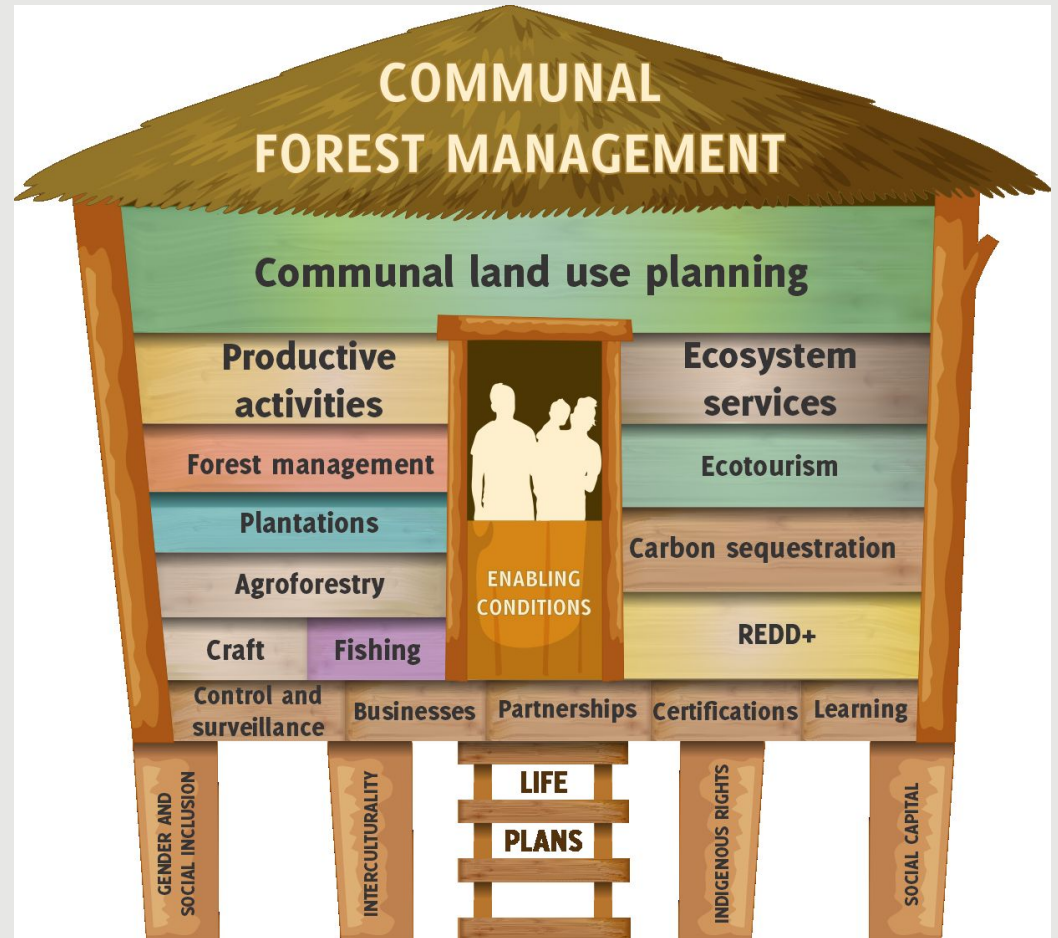
## Economic benefits reduce threats to forests, contributing to biodiversity conservation and GHG emissions reduction

- Sustainable Community Forest Management (CFM) reduces threats to conservation
- By 2024:
  - 520 hectares under restoration with native species
  - 120,000 hectares under improved natural resource management
  - 350 indigenous families with improved livelihoods
  - 400,000 tCO<sub>2</sub> annual emission reductions
  - Nii Biri as the main financial sustainability mechanism of CFM
  - CFM financial platform for scaling-up the experience of the Forest Alliance



# Communal Forest Management model

- Transitioning from initial ToC to the Forest Alliance CFM model
- Integrating AIDER's 20-year experience in developing a CFM model in Ucayali that incorporates previous USAID "Social Capital" activity lessons learned



# MAIN CHALLENGES

- Scaling-up of CFM model and Nii Biri business scheme with effective alignment of public and private funds
- Integration of CFM model into local and national development policies and plans
- Indigenous economy & business culture promotion to encourage a paradigm shift about the CFM model
- Biosafety specific protocol for technical assistance and training to re-engage with indigenous people under the COVID-19 context



# QUESTIONS & DISCUSSION





# QUESTIONS & DISCUSSION

1. What baseline information on attitudes and behaviors has Alianza Forestal used, and how will outcomes be measuring?
2. How does the relationship with Althelia function?
3. How has AIDER's relationship with the community evolved over time, and how has AIDER evolved as an organization in parallel?
4. What are the implications of USAID's new policy on Indigenous Communities for the Alianza Forestal activity?

# COMPLETE THE FLASH POLL AND VISIT THE CE LEARNING GROUP SITE

- [Post-Webinar Flash Feedback Form \(2 minutes\)](#)
- [CE Learning Group site](#)
- [CE Learning Agenda](#)

The screenshot shows the website for the USAID E3/ Forestry & Biodiversity Conservation Enterprises Collaborative Learning Group. The header includes navigation links for 'Documents', 'News & Events', 'Learning Agenda', 'Wiki Knowledge Base', 'Discussions', 'Cross-Mission Learning', and 'CWT'. The main content area features a 'Home' link, a title 'Conservation Enterprises', and a paragraph explaining the group's focus on testing key assumptions regarding the effectiveness of conservation enterprises. Below this is a section titled 'What You Can Do Here' with five icons representing different activities: 'See What We've Learned' (a flowchart), 'Read the Latest Research' (a USB drive labeled 'DATA'), 'Ask the Group' (two speech bubbles), 'Meet Other Members' (two smiling faces), and 'Attend an Event' (a calendar). A search bar and a 'CONSERVATION ENTERPRISE CASE STUDIES' banner are also visible.

← BIODIVERSITY CONSERVATION GATEWAY ABOUT LOGIN | CONTACT

USAID E3/ FORESTRY & BIODIVERSITY  
**Conservation Enterprises**  
COLLABORATIVE LEARNING GROUP

USAID  
FROM THE AMERICAN PEOPLE

Home Documents News & Events Learning Agenda Wiki Knowledge Base Discussions Cross-Mission Learning CWT

## Conservation Enterprises

Conservation enterprises approaches are defined by a development hypothesis (theory of change) that if income is increased through conservation enterprises, then participants will discontinue environmentally unsustainable activities, leading to reductions to threats to the environment.

Over the past two decades, conservation enterprise approaches have been used extensively in USAID biodiversity programming. Yet, little information has been collected in a systematic way to test key assumptions regarding the effectiveness of these approaches. This group can gain a deeper understanding of the effectiveness of conservation enterprises by exploring a set of shared learning questions focused on the theory of change. Explore the [Conservation Enterprise Learning Agenda](#).

Search this Site

CONSERVATION ENTERPRISE CASE STUDIES

### What You Can Do Here

- See What We've Learned
- Read the Latest Research
- Ask the Group
- Meet Other Members
- Attend an Event

¡GRACIAS!  
¡THANK YOU!

Marioldy Sánchez  
Project Manager of the Forest Alliance,  
[msanchez@aider.com.pe](mailto:msanchez@aider.com.pe)

Megan Hill, Environment Protection  
Specialist, Office of Forestry and Biodiversity,  
[mhill@usaid.gov](mailto:mhill@usaid.gov)



**AIDER**  
Bosque manejado ¡Futuro asegurado!